



Dumpster Access™

Safety Access Case Study Kent School District Kent, Washington





Dumpster Access™

Situation

Kent School District (KSD) is the fourth largest school district in Washington state. KSD serves a 72-mile area comprised of 42 sites including 28 elementary, 6 middle, 2 academies, and 4 high schools.

A single carpenter serves all 42 locations. Dumpsters at each school were outfitted with aging wooden access ramps or stairs.

Safety, inspections, maintenance, removals, and replacements became a costly concern that spread staff too thin.

Wooden access points were wearing out faster than could be replaced or maintained. Over time, the wood steps and ramps posed a hazard as they grew slippery in wet or icy conditions.

KSD needed a better solution. Voters approved a construction bond allowing for site improvements. A key need was for safer systems with a lower-total-cost-of-ownership, and access units with less labor-intensive materials throughout the district.

Project Specs

Work Safe Access provided OSHA-compliant Dumpster Access units for Kent School District.

Materials used include:

- Treads, Rise Stairs
- Chain-Rails (removable)
- Safety Rails
- Platforms
- Ramps
- Mobility Wheels
- Peddle Lift Systems





Dumpster Access™

Unique Challenges

Sites, Scalability, and Timing

Sites

Schools are located across a 72-mile region and refuse sites vary at each location. Collectively, the sites have a range of dumpster sizes. Safe access to each container varies and presents additional considerations such as height, length, width, slope (in the case of ramp access), and proximity to fire lanes.

The school district's dumpsters range in capacity from 3-Yard and up to 8-Yard sizes. The containers have heights ranging from 5' to 7'. Access to these dumpsters needs to be specific for each dumpster height to meet OSHA requirements.

Work Safe Access conducted field surveys and coordinated with KSD Project Specialist Lynell Mooney to confirm scope details, logistical needs, the destruction and removal of the wooden access points, and to ensure a seamless design and installation process.

Scalability

It was critical to understand the exact footprint in which each access unit could be installed.

Work Safe Access consulted with the district to determine which configurations would be most advantageous for each site. The 42 unique footprints required a range of



Dumpster Access models. Dimensions (height, width, length, and the case of the 11 ramp units installed, and slope) of the access units conformed to OSHA standards for workplace safety and fit within the footprints. Work Safe Access offer several access units, including mobile step units with locking wheels, stationary step units, and various ramp-and-platform units. KSD invested in each type of unit for the schools, including customized units for particular situations.

Timing

The entire review, design, destruction and removal of existing materials, and the delivery and installation of 11 ramps, 55 1-tread units, and 18 mobile 2-tread units across 42 sites was completed during the summer recess period, well under the district's estimated delivery.

Safety and Mobility

Perforated, self-draining aluminum treads and platforms eliminate walkway pooling and provide a non-slip surface. Custodians can now confidently go about their refuse routines without the risk of rickety or slick wooden surfaces that collect and absorb moisture.



Dumpster Access™

Results

In any weather condition, staff can safely and quickly access the dumpsters. Sites where mobile units were installed, custodians can move the Dumpster Access units, lock the wheels, and dump the refuse materials with ease.

Affordable Access Solution, Low Cost of Ownership

Kent School District now has dependable, safe access points for custodians with a diminished risk of injury via slips and falls that wooden access units posed. The district eliminated the expense of inspection, repair, and removal of a system constantly deteriorating due to inclement Pacific Northwest conditions. Finally, the system in place is a long-term access solution that allows the school district to invest elsewhere.

Dumpster Access™



3902 B Street NW
Suite B
Auburn, WA 98001

sales@worksafeaccess.com

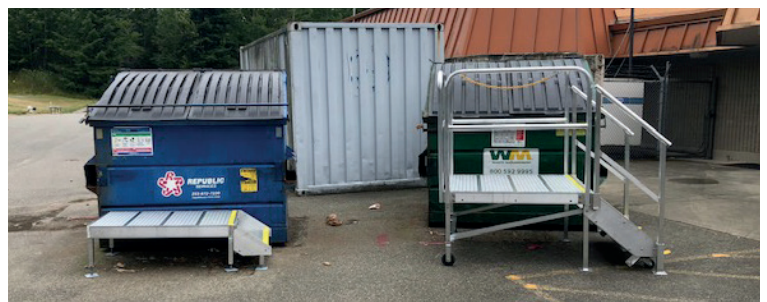
(866) 935-9255
worksafeaccess.com

Dumpster Access products are manufactured by Work Safe Access. Work Safe Access is a division of Welcome Ramp Systems.

- *Low-Maintenance*
- *Slip Resistant Fall Protection*
- *OSHA-Compliant*
- *Customized Access Solutions*

Work Safe Access provided site surveys and recommendations. Working with the KSD Project Specialist, Work Safe Access developed customized versions of its Dumpster Access units.

The school district's carpenter now has time to dedicate to other issues, and is no longer tied to access unit maintenance and upkeep. Custodians can safely access every unit safely and efficiently throughout the year across all 42 sites.



“Our Dumpster Access units look good, feel safe, and are well-designed throughout.”

– *Lynell Mooney*
Project Specialist,
Kent School District